

PROSPERITY BANK® - RENOVATION
5949 SHERRY LANE
SUITE 750
DALLAS, TEXAS 75225

Project Number : 25-8974-01

LEGEND

——— EXISTING TO REMAIN

----- REMOVE

DEMOLITION NOTES:

- ① REMOVE ALL EXISTING CEILING GRID, TILES AND LIGHT FIXTURES.
- ② REMOVE EXISTING MILLWORK.
- ③ REMOVE EXISTING FLOORING.
- ④ REMOVE EXISTING CROWN MOULDING.
- ⑤ REMOVE EXISTING CARPET.
- ⑥ REMOVE EXISTING BASE.
- ⑦ REMOVE AND STAGE EXISTING GLASS SIDELITES FOR RE-USE.
- ⑧ SAVE EXISTING DISHWASHERS.
- ⑨ REMOVE BRONZE WINDOW HEADER.
- ⑩ REMOVE DOOR TRANSOM.
- ⑪ REMOVE BRONZE CASING AT OPENING.

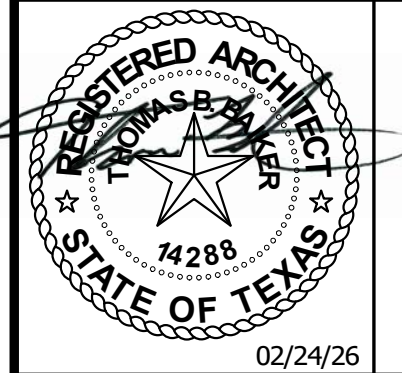


ISSUED FOR CLIENT APPROVAL	DATE
ISSUED FOR BIDDING	
ISSUED FOR PERMIT	
ISSUED FOR CONSTRUCTION	

REVISIONS		
MARK	DESCRIPTION	DATE

The information, ideas, designs, details, layouts, techniques, features, arrangements, plans, sequences, dimensions, allowances, tolerances, concessions, specifications, intentions, or embodiments, as illustrated, arranged, displayed, noted, recorded, indicated, represented, disclosed, evidenced, detailed or otherwise related to tangible form hereby, either expressly, inherently or by implication, are the confidential and proprietary information of SLI Design, Inc., and shall not be used for any purpose other than the specific project or undertaking identified on the drawing title block or legend for which they are and have been prepared by SLI Design, Inc. Any other reproduction, disclosure or use of any portion of the confidential and proprietary information of SLI Design, Inc., shall be a breach of the obligation of confidence created by the acceptance of this drawing from SLI Design, Inc. for a specific project or contract. Any copying, duplication, reproducing, utilization, alteration, modification, revision or change to this drawing, is expressly prohibited unless done with the prior written consent or approval of SLI Design, Inc., and shall not be undertaken without receipt of such prior written approval. This drawing is loaned by SLI Design, Inc., for the limited purpose of complying with a specific contract. The drawing remains the property of SLI Design, Inc., and shall be returned upon request or completion of the contract, unless specifically authorized by contract, under which it was loaned.

PRINT DATE: 2/24/2026 1:45:36 PM



DRAWING TITLE	
DEMO PLAN-7TH FLOOR	
DRAWN BY	Author SHEET NO.
CHECKED BY	Checker D-1.00
APPROVED BY	Approver

① LEVEL 7 - EXISTING & DEMO
1/8" = 1'-0"

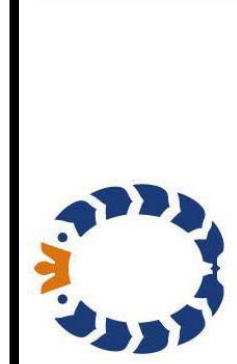




ARCHITECTURE | DESIGN | CONSTRUCTION

15810 PARK TEN PLACE, SUITE 300
HOUSTON, TEXAS 77084
713-465-4650
www.sligroup.com

© COPYRIGHT



PROSPERITY BANK - RENOVATION

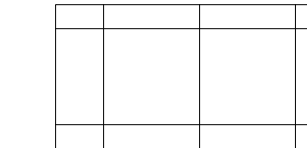
PROSPERITY BANK - RENOVATION
5949 SHERRY LANE
SUITE 750
DALLAS, TEXAS 75225

Project Number : 25-8974-01

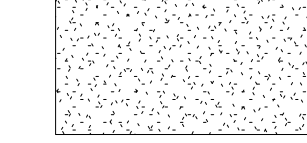
GENERAL NOTES

1. NOTIFY ARCHITECT OF ANY DISCREPANCIES AND/OR OMISSIONS.
2. REMODEL PROJECTS REQUIRE FIELD VERIFICATION BY SUBCONTRACTOR
3. ALL CEILING GRIDS SHALL BE CENTERED IN ROOM UNLESS OTHERWISE SPECIFIED
4. CEILING HEIGHTS TO BE 9'-0" A.F.F. UNLESS OTHERWISE SPECIFIED

CEILING LEGEND



2'X2' CERTAINTED SAND MICRO TEGULAR CEILING TILE WITH 15/16" WHITE GRID



TAPED, FLOATED, TEXTURED AND PAINTED

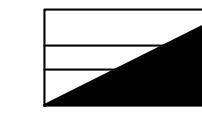
10' - 10" A.F.F.

INDICATES CEILING HEIGHT

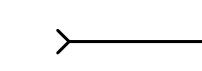
LIGHTING LEGEND



2'X4' RECESSED LED FIXTURE;
RE:ELECTRICAL DRAWINGS



2'X4' RECESSED LED FIXTURE
WITH EMERGENCY BACKUP;
RE:ELECTRICAL DRAWINGS



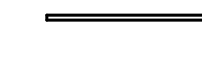
UNDERCOUNTER TASK LIGHTING;
RE:ELECTRICAL DRAWINGS



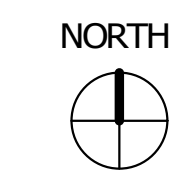
RECESSED CAN LIGHT FIXTURE;
RE:ELECTRICAL DRAWINGS



EMERGENCY EGRESS SIGN/LIGHT



DECORATIVE LINEAR PENDANT
LIGHT FIXTURES



1 LEVEL 7
1/8" = 1'-0"

ISSUED FOR CLIENT APPROVAL	DATE
ISSUED FOR BIDDING	
ISSUED FOR PERMIT	
ISSUED FOR CONSTRUCTION	

REVISIONS		
MARK	DESCRIPTION	DATE

The information, ideas, designs, details, layouts, techniques, features, arrangements, plans, sequences, dimensions, allowances, tolerances, concessions, specifications, intentions, technology or embodiments, as illustrated, arranged, displayed, noted, recorded, indicated, represented, disclosed, evidenced, detailed or otherwise related to tangible form hereby, either expressly, inherently or by implication, are the confidential and proprietary information of SLI Design, Inc., and shall not be used for any purpose other than the specific project or undertaking identified on the drawing title block or legend for which they are and have been prepared by SLI Design, Inc. Any other reproduction, disclosure or use of any portion of the confidential and proprietary information of SLI Design, Inc., shall be a breach of the obligation of confidence created by the acceptance of this drawing from SLI Design, Inc. for a specific project or Contract. Any copying, duplicating, reproducing, utilization, alteration, modification, revision or change to this drawing, is expressly prohibited unless done with the prior written consent or approval of SLI Design, Inc., and shall not be undertaken without receipt of such prior written approval. This drawing is loaned by SLI Design, Inc., for the limited purpose of complying with a specific Contract. The drawing remains the property of SLI Design, Inc., and shall be returned upon request or completion of the contract, unless specifically authorized by Contract, under which it was loaned.

PRINT DATE: 2/24/2026 11:48:57 AM



DRAWING TITLE
REFLECTED CEILING PLAN-7TH FLOOR

DRAWN BY	Author	SHEET NO.
CHECKED BY	Checker	A-4.00
APPROVED BY	Approver	

C:\Users\jld\Documents\Prosperity Bank - Sherry Plaza_Ceiling.mxd_amaen\NLD.rvt



ARCHITECTURE | DESIGN | CONSTRUCTION

15810 PARK TEN PLACE, SUITE 300
HOUSTON, TEXAS 77084
713-465-4650
www.sligroup.com

SPACE LEFT BLANK FOR STAMP

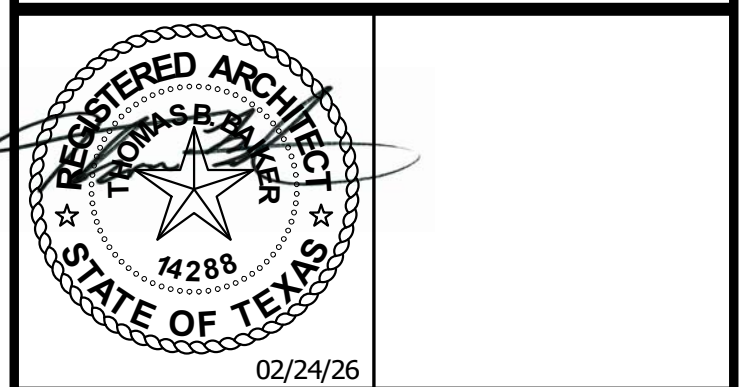
PROSPERITY BANK
PROSPERITY BANK - RENOVATION
5949 SHERRY LANE
SUITE 750
DALLAS, TEXAS 75225
Project Number : 25-8974-01

ISSUED FOR CLIENT APPROVAL	DATE
ISSUED FOR BIDDING	
ISSUED FOR PERMIT	
ISSUED FOR CONSTRUCTION	

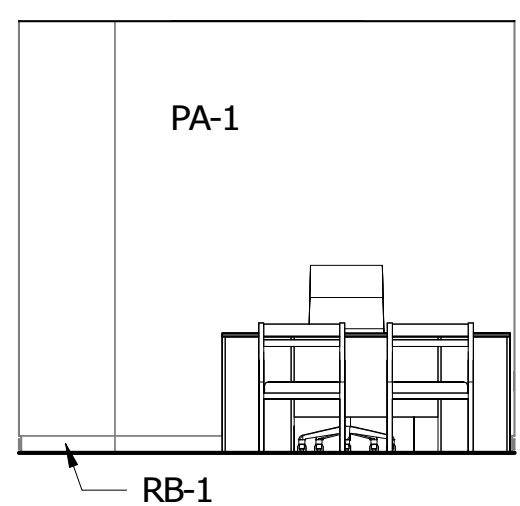
REVISIONS		
MARK	DESCRIPTION	DATE

The information, ideas, designs, details, layouts, techniques, features, arrangements, plans, sequences, dimensions, allowances, tolerances, concessions, specifications, intentions, technology or embodiments, as illustrated, arranged, displayed, noted, recorded, indicated, represented, evidenced, detailed or otherwise reduced to tangible form hereon, either expressly, inherently or by implication, are the confidential and proprietary information of SLI Design, Inc., and shall not be used for any purpose other than the specific project or undertaking identified on the drawing title block or legend for which they are and have been prepared by SLI Design, Inc. Any other reproduction, disclosure or use of any portion of the confidential and proprietary information of SLI Design, Inc., shall be a breach of the obligation of confidence created by the acceptance of this drawing from SLI Design, Inc. for a specific project or contract. Any copying, duplicating, reproducing, utilizing, alteration, modification, revision or change to this drawing, is expressly prohibited unless done with the prior written consent or approval of SLI Design, Inc., and shall not be undertaken without receipt of such prior written approval. This drawing is loaned by SLI Design, Inc., for the limited purpose of complying with a specific contract. The drawing remains the property of SLI Design, Inc., and shall be returned upon request or completion of the contract, unless specifically authorized by contract, under which it was loaned.

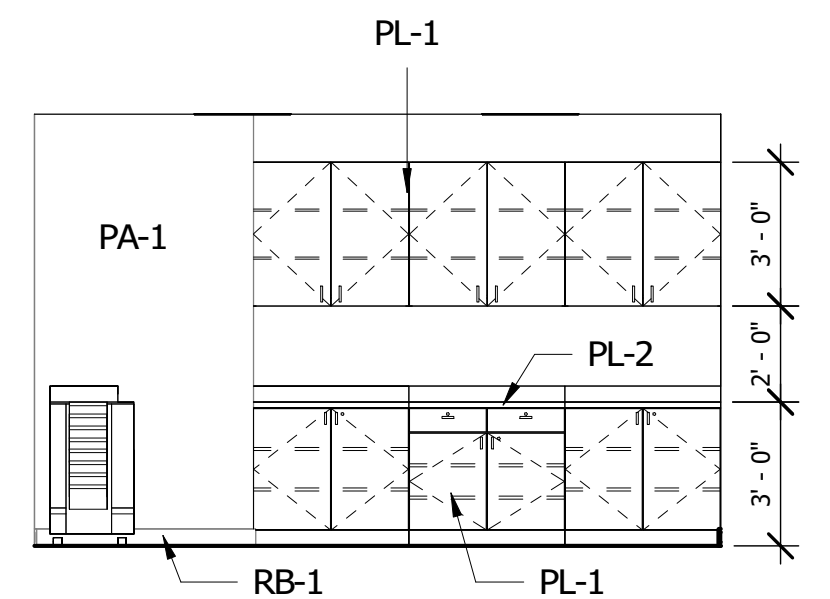
PRINT DATE: 2/24/2026 11:36:38 AM



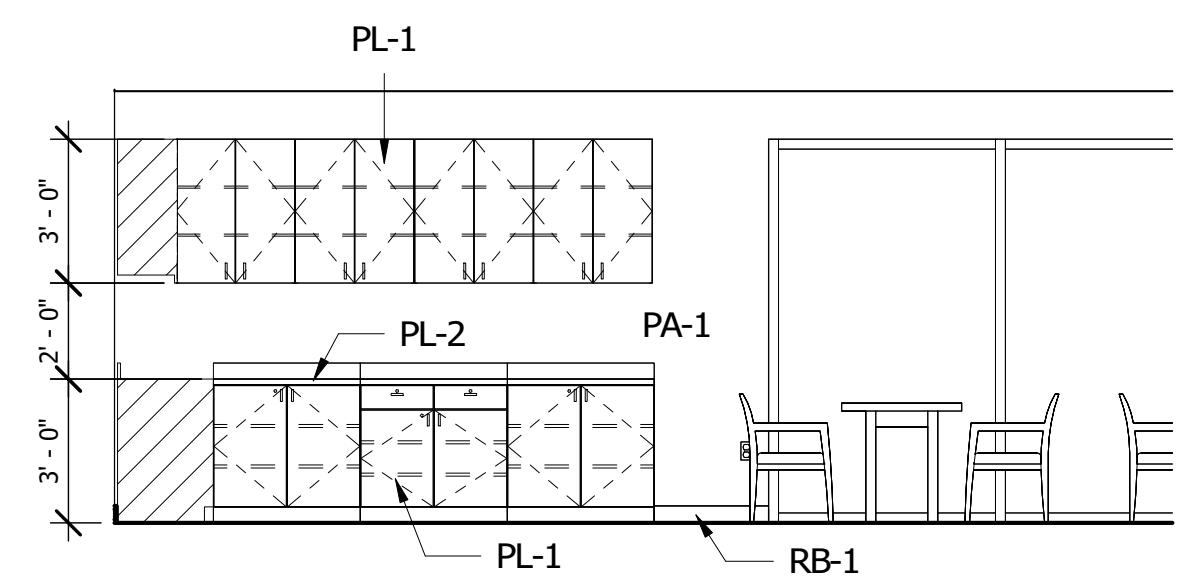
DRAWING TITLE	
INTERIOR ELEVATIONS	
DRAWN BY	Author SHEET NO.
CHECKED BY	Checker A-10.00
APPROVED BY	Approver



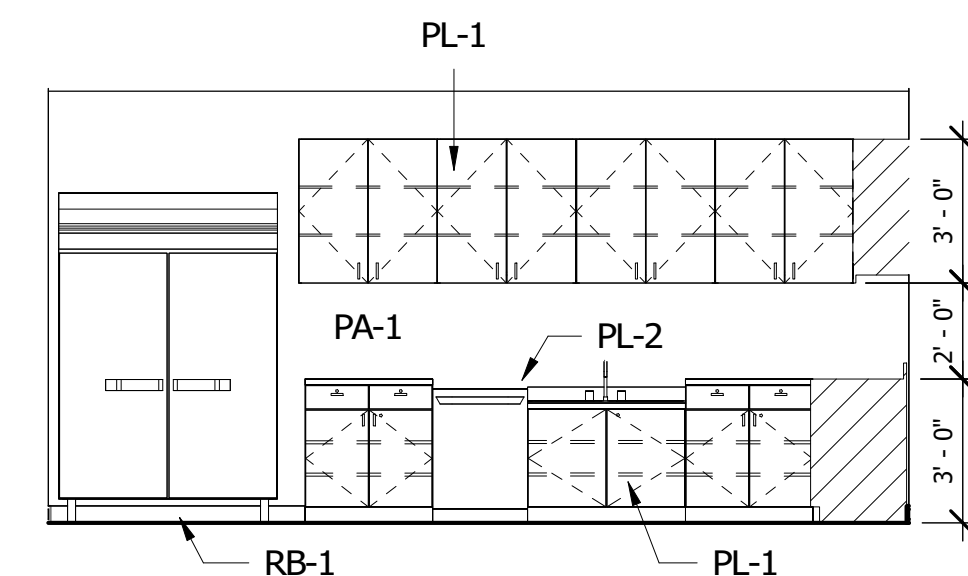
12 754 OFFICE - SOUTH
1/4" = 1'-0"



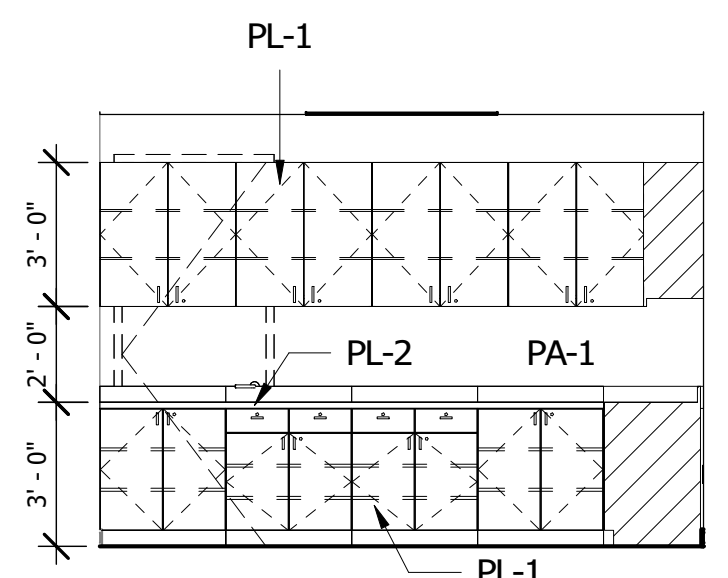
11 762 WORK AREA - EAST
1/4" = 1'-0"



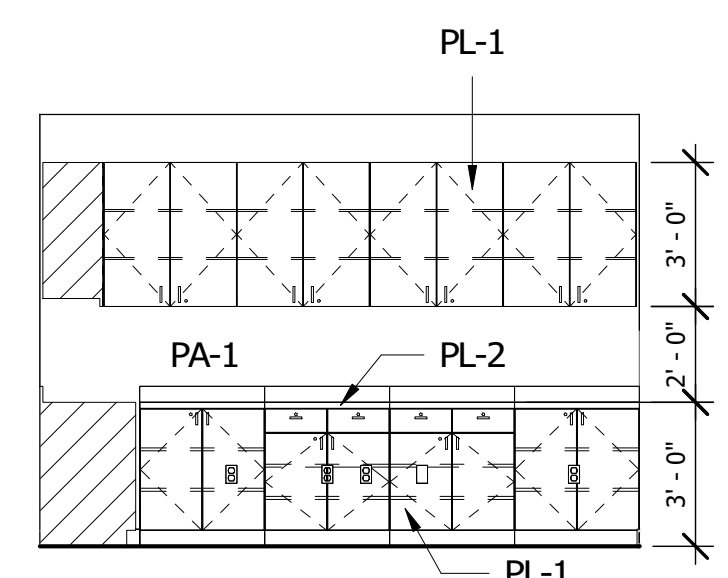
10 741 BREAKROOM - SOUTH
1/4" = 1'-0"



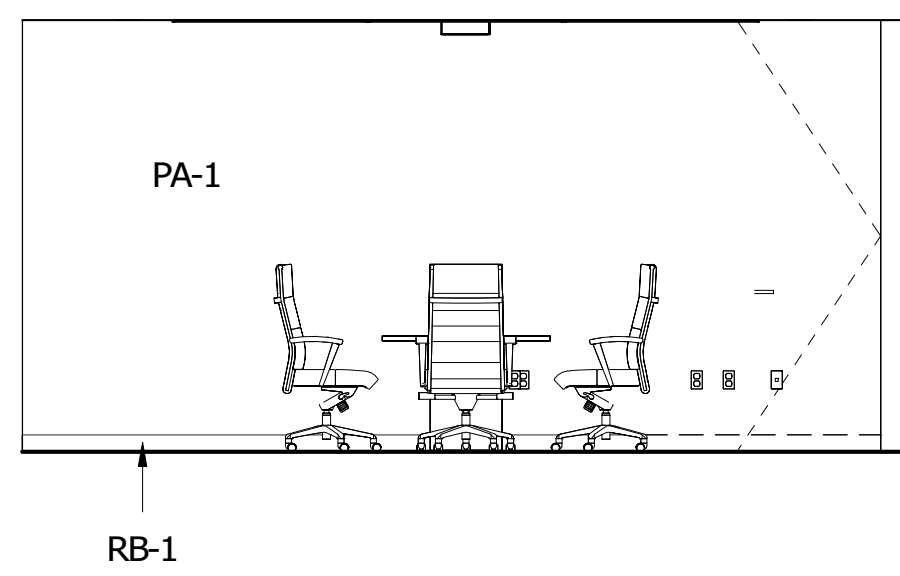
9 741 BREAKROOM - EAST
1/4" = 1'-0"



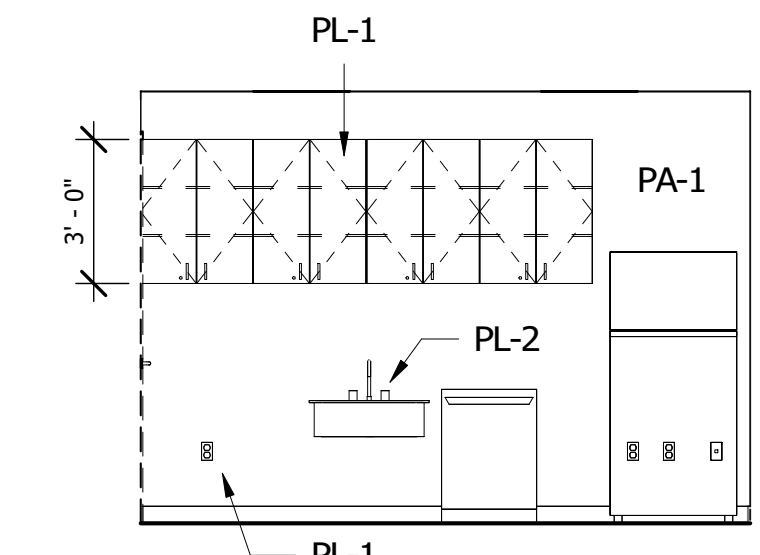
8 742 WORK ROOM - NORTH
1/4" = 1'-0"



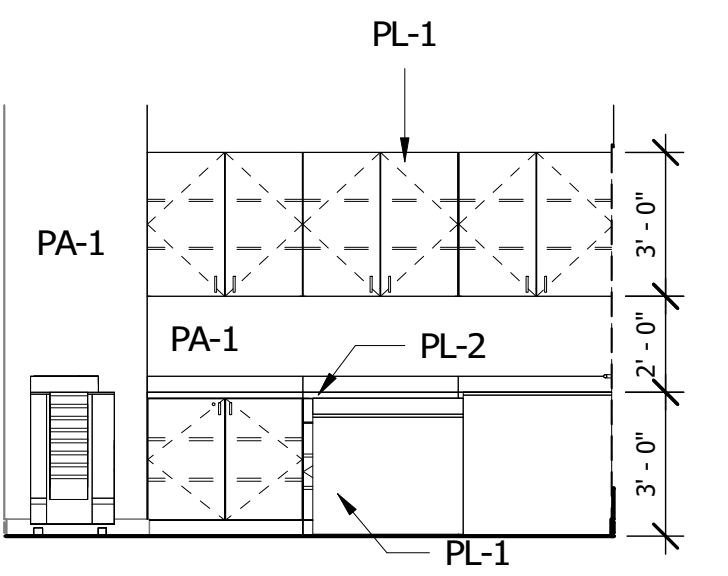
7 742 WORK ROOM - EAST
1/4" = 1'-0"



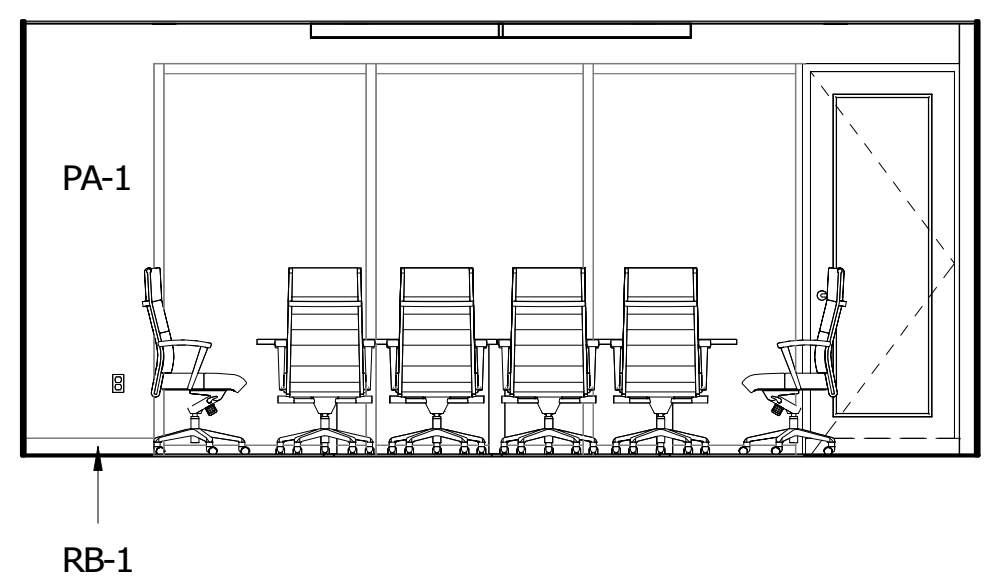
6 749 CONFERENCE - SOUTH
1/4" = 1'-0"



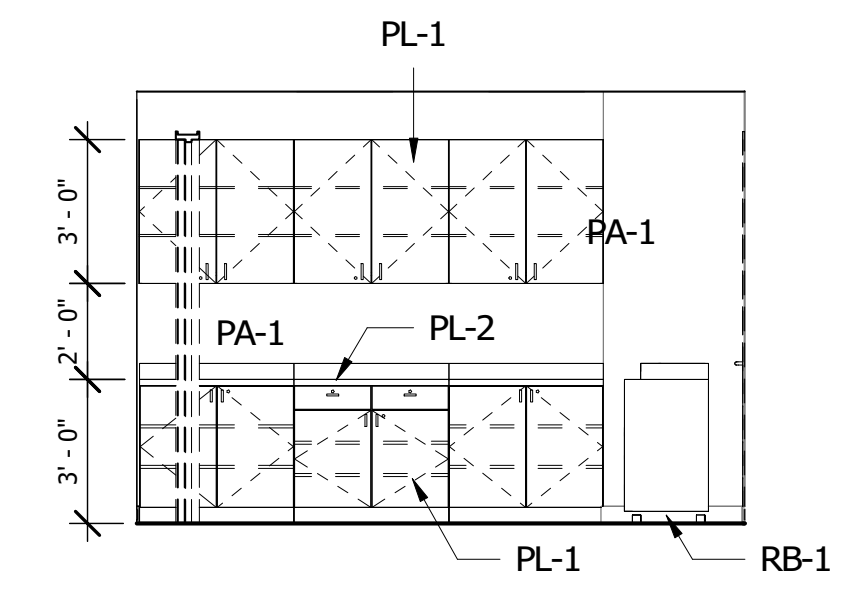
5 752 COFFEE BAR - EAST
1/4" = 1'-0"



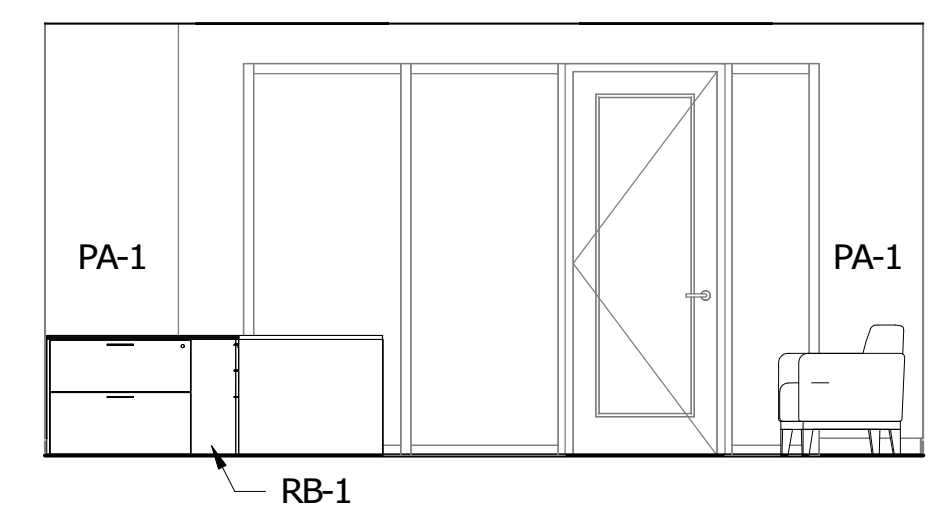
4 748 WORK ROOM - WEST
1/4" = 1'-0"



3 708 CONFERENCE - SOUTH
1/4" = 1'-0"



2 704 WORK ROOM - EAST
1/4" = 1'-0"



1 701 MAIN ENTRY - SOUTH
1/4" = 1'-0"

C:\Users\jleah\Documents\Prosperity Bank - Sherry Plaza_Central model_amaer\NML01.rvt



ARCHITECTURE | DESIGN | CONSTRUCTION

15810 PARK TEN PLACE, SUITE 300
HOUSTON, TEXAS 77084
713-465-4650
www.sligroup.com

SPACE LEFT BLANK FOR STAMP

PROSPERITY BANK - RENOVATION

5949 SHERRY LANE
SUITE 750
DALLAS, TEXAS 75225

Project Number : 25-8974-01



ISSUED FOR CLIENT APPROVAL	DATE
ISSUED FOR BIDDING	02/24/26
ISSUED FOR PERMIT	02/24/26
ISSUED FOR CONSTRUCTION	

REVISIONS		
MARK	DESCRIPTION	DATE

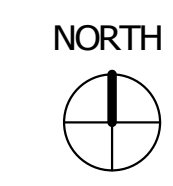
The information, ideas, designs, details, layouts, techniques, features, arrangements, plans, sequences, dimensions, allowances, tolerances, concessions, specifications, intentions, technology or embodiments, as illustrated, arranged, displayed, noted, recorded, indicated, represented, disclosed, evidenced, detailed or otherwise reduced to tangible form hereby, either expressly, inherently or by implication, are the confidential and proprietary information of SLI Design, Inc., and shall not be used for any purpose other than the specific project or undertaking identified on the drawing title block or legend for which they are and have been prepared by SLI Design, Inc. for a specific project or Contract. Any copying, duplication, reproduction, utilization, alteration, modification, revision or change to this drawing, is expressly prohibited unless done with the prior written consent or approval of SLI Design, Inc., and shall not be undertaken without receipt of such prior written approval. This drawing is loaned by SLI Design, Inc., for the limited purpose of complying with a specific Contract. The drawing remains the property of SLI Design, Inc., and shall be returned upon request or completion of the contract, unless specifically authorized by Contract, under which it was loaned.

PRINT DATE: 2/25/2026 1:33:16 PM



DRAWING TITLE	
7TH FLOOR FINISH PLAN	
DRAWN BY	Author SHEET NO.
CHECKED BY	Checker A-12.01
APPROVED BY	Approver

1 LEVEL 1 - FINISH PLAN
1/8" = 1'-0"



C:\Users\j646\Documents\Prosperity Bank - Sherry Plaza_Central model_amaan\NML01.rvt

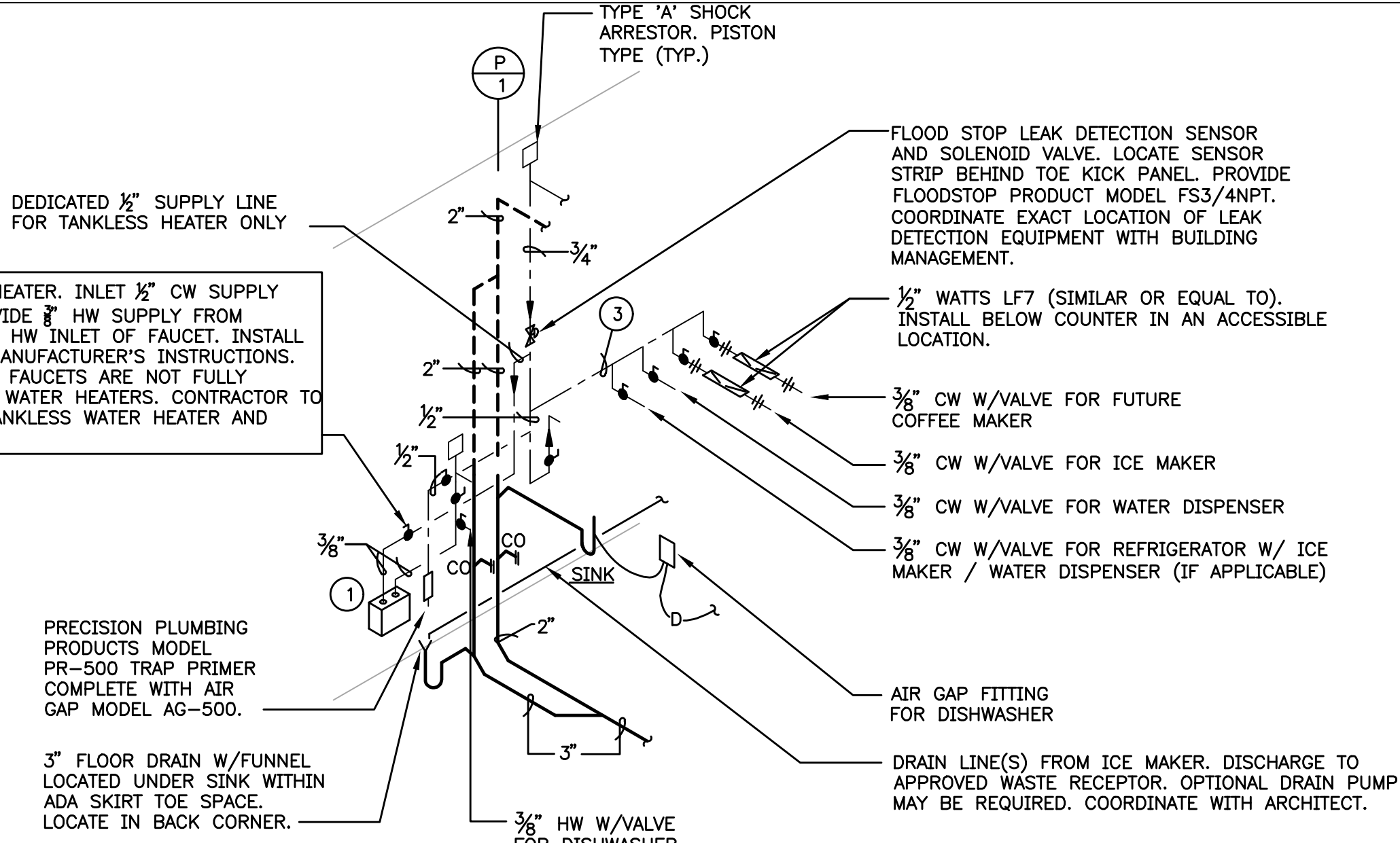
GENERAL NOTES:

- A. CONTRACTOR TO VISIT SITE AND BECOME FAMILIAR WITH ALL EXISTING CONDITIONS, TO DETERMINE THE EXTENT OF DEMOLITION REQUIRED TO FACILITATE NEW CONSTRUCTION AND INCLUDE ALL SUCH WORK IN BID. CONTRACTOR TO VERIFY ALL EXISTING CONDITIONS PRIOR TO BID (INCLUDING BUT NOT LIMITED TO UNDERFLOOR SANITARY LOCATIONS AND CIVIL CONNECTIONS). CONTRACTOR SHALL NOTIFY ARCHITECT OF ALL DISCREPANCIES PRIOR ANY INSTALLATIONS.
- B. ALL UNUSED PLUMBING FIXTURES ALONG WITH ALL ASSOCIATED PIPING, EXISTING WATER HEATER, AND DRAINS ARE TO BE DEMOLISHED. VALVE AND CAP DOMESTIC COLD AND DOMESTIC HOT WATER PIPING (IF APPLICABLE) IN CEILING SPACE AT MAINS. CAP VENT PIPING IN CEILING SPACE AT MAINS. CUT AND CAP SANITARY BELOW FLOOR. PATCH ALL UNUSED EXISTING WALL AND FLOOR OPENINGS. REPAIR TO MATCH EXISTING. COORDINATE ALL DEMOLITION WITH ARCHITECT AND BUILDING MANAGEMENT. ALL ITEMS TO BE DEMOLISHED NOT SCHEDULED FOR REUSE SHALL BE TURNED OVER TO OWNER FOR SALVAGE. ANY ITEMS NOT RETAINED BY OWNER SHALL BE DISPOSED OF AT CONTRACTOR'S EXPENSE. REFER TO ARCHITECTURAL DRAWINGS FOR ADDITIONAL DEMOLITION NOTES.
- C. REFER TO ARCHITECTURAL DRAWING FOR PLUMBING FIXTURE TYPES AND SPECIFICATIONS. PROVIDE ALL STOP VALVES, SHUT-OFF VALVES, P-TRAPS, TAIL PIECES, TRAP PRIMERS, PISTON-TYPE WATER HAMMER ARRESTORS, ETC. AS REQUIRED FOR COMPLETE INSTALLATION. INSULATE ALL EXPOSED WASTE AND WATER LINES WITH "PLUMBEREX PRO SERIES 2000" INSULATION KIT.
- D. CORE-DRILL ALL HOLES IN SLAB AS REQUIRED FOR NEW PIPING. VERIFY ALLOWABLE CORE SIZE(S) AND EXACT LOCATION OF STRUCTURE BELOW FLOOR WITH STRUCTURAL ENGINEER BEFORE CORING FLOOR. DO NOT CUT ANY STRUCTURAL SUPPORTS. FLOOR MUST BE SEALED TO A WATER TIGHT CONDITION. IF THE EXISTING FLOOR SLAB IS A POST-TENSION TYPE SLAB, THE FLOOR SHALL BE X-RAYED PRIOR TO CORING ANY HOLES THROUGH FLOOR. DO NOT CUT ANY POST-TENSION CABLES WHEN CORING HOLES THROUGH FLOOR.
- E. BUILDING SEWERS: BUILDING SEWERS SHALL BE PROVIDED WITH CLEANOUTS LOCATED NOT MORE THAN 75'-0" APART MEASURED FROM THE UPSTREAM ENTRANCE OF THE CLEANOUT.
- F. CHANGES OF DIRECTION: CLEANOUTS SHALL BE INSTALLED AT EACH CHANGE OF DIRECTION OF THE BUILDING DRAIN HORIZONTAL WASTE OR SOIL LINES GREATER THAN 45 DEGREES. WHERE MORE THAN ONE CHANGE OF DIRECTION OCCURS IN A RUN OF PIPING, ONLY ONE CLEANOUT SHALL BE REQUIRED FOR EACH 40'-0" FEET OF DEVELOPED LENGTH OF THE DRAINAGE PIPING. ALL SEWER PIPING SHALL BE INSTALLED IN UNDERFLOOR UNLESS OTHERWISE NOTED.

SHOWN ON THIS PLAN IS UNDERFLOOR UNLESS OTHERWISE NOTED.

- G. CONCEALED PIPING: CLEANOUTS ON CONCEALED PIPING OR PIPING UNDER A FLOOR SLAB OR IN A CRAWL SPACE OF LESS THAN 24 INCHES IN HEIGHT OR A PLENUM SHALL BE EXTENDED THROUGH AND TERMINATE FLUSH WITH THE FINISHED WALL, FLOOR OR GROUND SURFACE OR SHALL BE EXTENDED TO THE OUTSIDE OF THE BUILDING. CLEANOUT PLUGS SHALL NOT BE COVERED WITH CEMENT, PLASTER OR ANY OTHER PERMANENT FINISH MATERIAL. WHERE IT IS NECESSARY TO CONCEAL A CLEANOUT OR TERMINATE A CLEANOUT IN AN AREA SUBJECT TO VEHICULAR TRAFFIC, COVER PLATE, ACCESS DOOR OR CLEANOUT SHALL BE OF AN APPROVED TYPE DESIGNED AND INSTALLED FOR THIS PURPOSE.
- H. VERIFY MAXIMUM PRESSURE IS NOT IN EXCESS OF 55PSI. IF IT IS, PROVIDE AND INSTALL PRESSURE REDUCING VALVES ON THE NEW LINES TO PROVIDE A MAXIMUM PRESSURE OF 55 PSI TO THE NEW FIXTURES OR TO EXISTING FIXTURES BEING REWORKED.
- I. ALL PLUMBING PIPE, FIXTURES AND FITTINGS SHALL BE LEAD FREE IN ACCORDANCE WITH THE "REDUCTION OF LEAD IN DRINKING WATER ACT" EFFECTIVE JANUARY 4, 2014.
- J. ALL WASTE PIPE 2 1/2" AND SMALLER SHALL HAVE A SLOPE OF NOT LESS THAN 1/4" PER FOOT; ALL WASTE PIPE 3" AND LARGER SHALL HAVE NOT LESS THAN 1/8" PER FOOT SLOPE.
- K. PROVIDE AHJ APPROVED BACKFLOW PREVENTION DEVICE PRIOR TO ALL APPLIANCE AND EQUIPMENT CONNECTIONS TO DOMESTIC COLD WATER SYSTEM. PIPE BACKFLOW PREVENTION DEVICE ATMOSPHERIC DISCHARGE TO APPROVED DRAIN, CONNECT INDIRECTLY.
- L. BREAKROOM UNDERCOUNTER FLOOR DRAIN SHALL BE J.R. SMITH MODEL 2005-A WITH FIG. 3590 SHORT OVAL FUNNEL.
- M. PROVIDE STAINLESS STEEL FLEXIBLE BRAIDED CONNECTORS WITH SHUT-OFF VALVES TO SERVE ALL FIXTURES AND EQUIPMENT CONNECTED TO DOMESTIC WATER SUPPLY.
- N. NO PVC SHALL BE INSTALLED IN THE RETURN AIR PLENUM SPACE.
- O. MAINTAIN FIRE RATING OF FIRE WALLS FOR ALL PIPING PENETRATIONS. COORDINATE WITH ARCHITECT FOR ADDITIONAL REQUIREMENTS.
- P. PROVIDE HEAT TRACE FREEZE PROTECTION OR ADEQUATE HEAT (40 DEG. F MIN) ON ALL WATER PIPING AND SANITARY P-TRAPS SUSCEPTIBLE TO FREEZING CONDITIONS. HEAT TRACE SHALL BE EQUAL TO A MANUFACTURED BY NELSON LT OR RAYCHEM XL. VERIFY EXACT LOCATION AND CONDITIONS AND COORDINATE WITH ELECTRICAL CONTRACTOR. INSULATE WITH 1" THICK PER INSULATION.

PROVIDE 1/2" SHUT-OFF TO HEATER. INLET 1/2" CW SUPPLY FROM PLUMBING WALL. PROVIDE 1" HW SUPPLY FROM TANKLESS WATER HEATER TO HW INLET OF FAUCET. INSTALL IN ACCORDANCE WITH ALL MANUFACTURER'S INSTRUCTIONS. NOTE: SOME SINGLE HANDLE FAUCETS ARE NOT FULLY COMPATIBLE WITH TANKLESS WATER HEATERS. CONTRACTOR TO VERIFY COMPATIBILITY OF TANKLESS WATER HEATER AND SELECTED FAUCET.



2 PLUMBING RISER DIAGRAM
SCALE: NONE

TANKLESS WATER HEATER SCHEDULE	
MARK	WH-1
LOCATION	BREAKROOM AND DISHWASHER
MANUFACTURER	CHRONOMITE (INSTANTANEOUS)
MODEL	CM-30L-277
REMARKS	0.20 GPM ULTRA LOW FLOW ACTIVATION (REPLACE FACTORY FAUCET FLOW CONTROL WITH VANDAL RESISTANT CHRONOMITE OMNI FLOW CONTROL VERSION 1.0 GPM PER MANUFACTURER'S REQUIREMENTS.) REMOVE IN LINE FLOW CONTROL AT WATER HEATER. REFER TO MANUFACTURER FOR FURTHER INSTRUCTIONS. 277 V, 1PH, 8.3 KW, 30 AMP BREAKER MICROPROCESSOR CONTROLLED (FACTORY SETTING 120°)
	PROVIDE CHRONOMITE DISCONNECT SWITCH 2095-1. REFER TO MANUFACTURER FOR ADDITIONAL INFORMATION. COORDINATE LOCATION WITH ARCHITECT.
	DISCONNECTS OF OTHER MANUFACTURERS MUST BE SIMILAR OR EQUAL TO CHRONOMITE SPECIFICATIONS. CONTRACTOR TO COORDINATE WITH ELECTRICAL TRADE TO ENSURE DISCONNECT IS PROVIDED FOR HEATER.

PLUMBING NOTES BY SYMBOL:

- 1 TANKLESS WATER HEATER BELOW COUNTER. LOCATE BEHIND ADA PANEL UNDER SINK. REFER TO TANKLESS WATER HEATER SCHEDULE. CLOSELY ADHERE TO ALL MANUFACTURER REQUIREMENTS REGARDING CW AND HW SUPPLY LINE SIZES AND THE USE OF A SHUT OFF VALVE FOR EACH TANKLESS WATER HEATER. LOCATE TANKLESS WATER HEATER WITHIN 12" OF FIXTURE CONNECTION.
- 2 CONNECT NEW 3" WASTE, 2" VENT AND 3/4" CW LINE FROM NEW TENANT SPACE TO NEAREST EXISTING TENANT PLUMBING RISERS. VERIFY EXACT LOCATION OF EXISTING PLUMBING PRIOR TO BID. PROVIDE 3/4" CW SHUT OFF VALVE ON TENANT CW LINE. PROVIDE A LINE SIZED VALVE AND CAP FOR FUTURE USE.
- 3 PROVIDE 1/2" CW TO SERVE REFRIGERATOR, COFFEE MAKER, WATER DISPENSER AND ICE MACHINE. PROVIDE INDIVIDUAL 3/8" WATER LINE TO EACH APPLIANCE COMPLETE WITH OUTLET BOX, 1/4" SHUT OFF VALVE, 1/4" OUTLET AND WATER HAMMER ARRESTOR. COORDINATE OUTLET BOX ROUGH-IN HEIGHT WITH APPLIANCE MANUFACTURER REQUIREMENTS. REFER TO ARCHITECTURAL DRAWINGS FOR EXACT APPLIANCE LOCATIONS.

THE EXISTING FIRE SPRINKLER PIPING SYSTEM SHALL BE UPDATED TO MAINTAIN A FULLY FUNCTIONING FIRE SUPPRESSION SYSTEM THAT SATISFIES THE REQUIREMENTS OF THE AUTHORITIES HAVING JURISDICTION. THE FIRE SUPPRESSION SYSTEM SHALL BE LIGHT HAZARD UNLESS NOTED OTHERWISE. FIRE SPRINKLER PIPING AND SPRINKLER HEAD LOCATIONS SHALL BE REWORKED BY A QUALIFIED FIRE PROTECTION CONTRACTOR THAT SHALL DESIGN AND PREPARE PLANS FOR APPROVAL OF THE AUTHORITY HAVING JURISDICTION. THIS CONTRACTOR SHALL USE REFLECTED CEILING PLANS AS PREPARED BY THE ARCHITECT FOR HEAD LOCATIONS AND COORDINATION. THIS CONTRACTOR SHALL COORDINATE WITH ALL TRADES TO ALLOW ADEQUATE ABOVE CEILING WORKING CLEARANCES FOR EQUIPMENT, DUCTWORK, ELECTRICAL CONDUIT, LIGHT FIXTURES AND PLUMBING PIPING. SPRINKLER HEADS IN FINISHED AREAS SHALL BE CONCEALED TYPE WITH WHITE COVER PLATES OR CHROME PENDANT TYPE UNLESS NOTED OTHERWISE. COORDINATE EXACT SPRINKLER HEAD TYPE AND FINISHES WITH ARCHITECT. ALL HEADS TO BE CENTERED IN CEILING TILES. SPRINKLER HEADS IN UNFINISHED SPACES SHALL BE CHROME PENDANT TYPE.

